

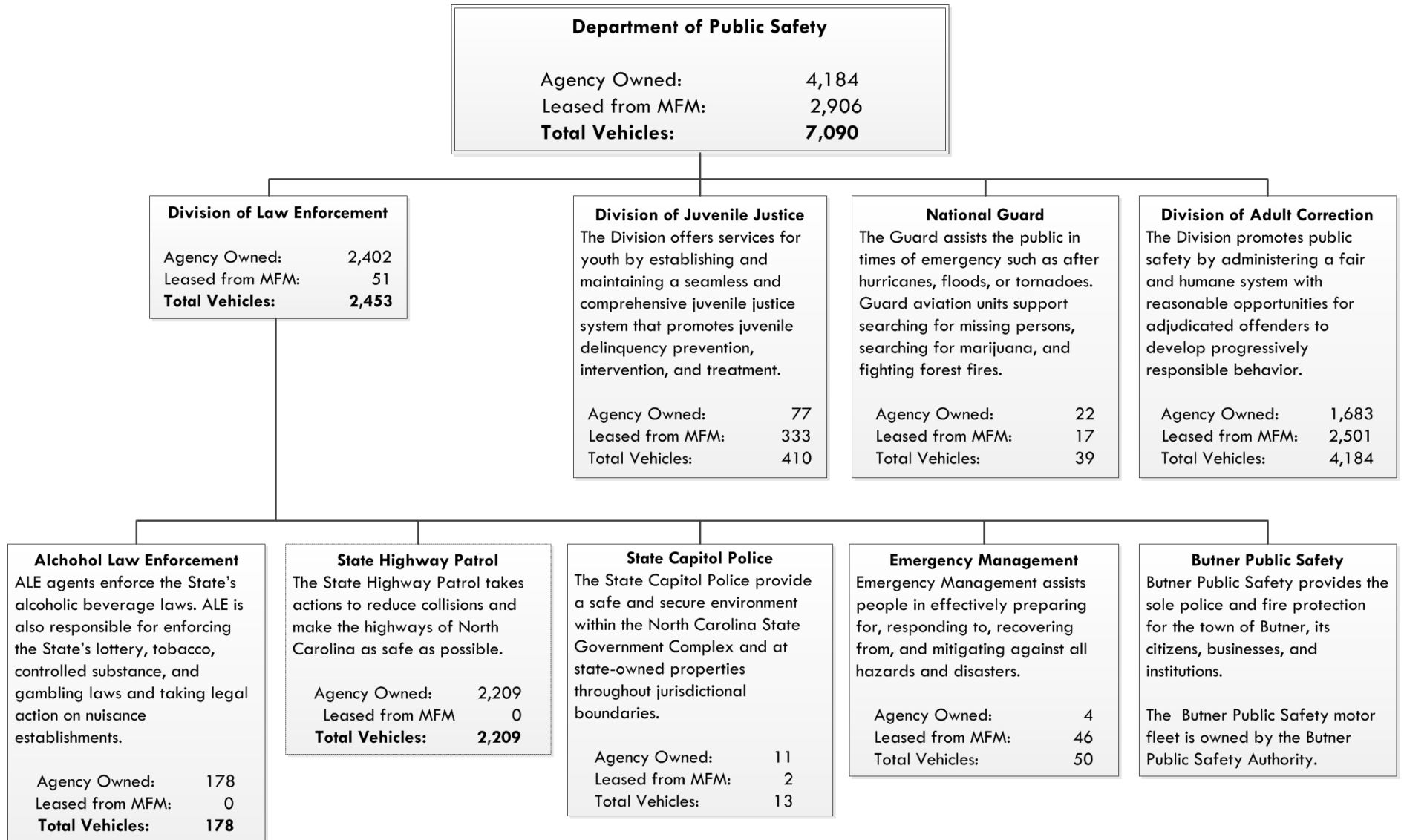
Exhibit 2: Department of Public Safety Law Enforcement Fleet, January to June 2012

	State Highway Patrol (n=2,209)	Alcohol Law Enforcement (n=178)	State Capitol Police (n=11)	Total DPS Law Enforcement (n=2,398)
<b>Assignment Type</b>				
Assigned	2,019	100	9	2,128
Motor Pool	190	36	0	226
Unassigned	0	38	0	38
Spare	0	4	2	6
<b>Body Type</b>				
Sedan	1,695	108	9	1,812
SUV	359	43	2	404
Pick-up truck/Truck	80	10	0	90
Minivan	0	10	0	10
Motorcycle	38	0	0	38
Van	2	6	0	8
Other	35	1	0	36
<b>Range of Model Years</b>				
Oldest	1940	1978	2000	1940
Newest	2012	2013	2007	2013
<b>Operating Cost Per Mile</b>				
Average	Data not collected	Data not collected	\$ 0.23	Data not collected by all three sections

Notes: Operating cost per mile includes fuel and maintenance costs. State Highway Patrol did not provide fuel costs on a per-vehicle basis. Alcohol Law Enforcement did not provide operating costs on a per-vehicle basis. Average operating cost per mile for State Capitol Police excludes spare vehicles. The number of State Highway Patrol vehicles does not include purchased vehicles awaiting registration and equipment up-fit. State Highway Patrol's oldest vehicle is an antique vehicle used for display.

Source: Program Evaluation Division based on Department of Public Safety vehicle inventory data.

# Appendix: Distribution of State-Owned Vehicles Across the Department of Public Safety's Four Operational Divisions



Notes: Vehicles owned by Alcohol Law Enforcement and State Highway Patrol were still in service as of June 30, 2012. The vehicle count for Alcohol Law Enforcement includes vehicles with confidential and fictitious plates. Vehicle information for the North Carolina Civil Air Patrol is not included. Division of Law Enforcement totals include all Alcohol Law Enforcement, State Highway Patrol, State Capitol Police, and Emergency Management vehicles and three vehicles used by Division of Law Enforcement administration that are leased from Motor Fleet Management. Department of Public Safety vehicle totals include four vehicles used by department administration that are leased from Motor Fleet Management.

Source: Program Evaluation Division based on Department of Public Safety vehicle inventories and Department of Administration's state vehicle title and Motor Fleet Management databases.

## Exhibit 4: Division of Law Enforcement Sections Do Not Follow Fleet Management Best Practices

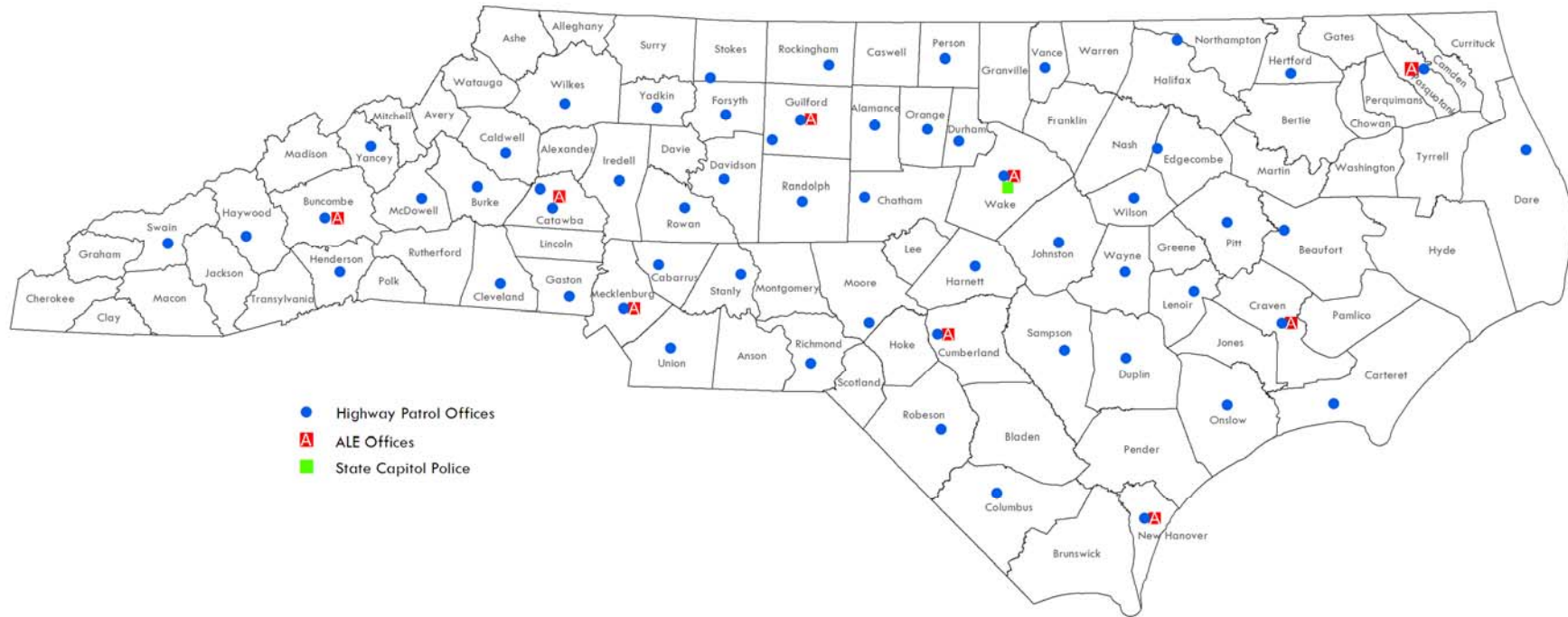
Fleet Management Best Practice	Description	State Highway Patrol	Alcohol Law Enforcement	State Capitol Police
Policies and procedures	<p>Written policies and procedures for</p> <ul style="list-style-type: none"> <li>• who can use vehicles</li> <li>• how vehicles can be used</li> <li>• when vehicles can be used</li> <li>• vehicle acquisition</li> <li>• vehicle disposal</li> <li>• vehicle maintenance</li> </ul>	<p>●</p> <p>●</p> <p>●</p> <p>●</p> <p>●</p> <p>●</p>	<p>●</p> <p>●</p> <p>○</p> <p>○</p> <p>●</p> <p>●</p>	<p>○</p> <p>○</p> <p>○</p> <p>○</p> <p>○</p> <p>●</p>
Fleet information management system	<p>Electronically tracks vehicle information on a per-vehicle basis and often includes</p> <ul style="list-style-type: none"> <li>• vehicle inventory</li> <li>• changes in fleet composition over time</li> <li>• miles per vehicle</li> <li>• frequency of use per vehicle</li> </ul>	<p>●</p> <p>○</p> <p>●</p> <p>◐</p>	<p>●</p> <p>○</p> <p>●</p> <p>○</p>	<p>●</p> <p>○</p> <p>●</p> <p>●</p>
Financial management	<p>Tracks direct and indirect costs on a per-vehicle basis, including</p> <ul style="list-style-type: none"> <li>• maintenance and repairs</li> <li>• fuel</li> <li>• depreciation for owned vehicles</li> <li>• insurance</li> <li>• services, benefits, official travel, and transportation of all fleet management personnel</li> <li>• operating equipment purchases for fleet management activities</li> <li>• operating equipment for services and repairs</li> </ul>	<p>◐</p> <p>◐</p> <p>◐</p> <p>◐</p> <p>◐</p> <p>◐</p> <p>◐</p>	<p>◐</p> <p>◐</p> <p>◐</p> <p>◐</p> <p>◐</p> <p>◐</p> <p>◐</p>	<p>●</p> <p>●</p> <p>◐</p> <p>◐</p> <p>◐</p> <p>◐</p> <p>◐</p>
Vehicle replacement and acquisition planning	<p>Procedures to acquire and dispose of vehicles and for timely replacement of the fleet, including</p> <ul style="list-style-type: none"> <li>• volume purchasing</li> <li>• disposal based on mileage, condition, or vehicle type</li> <li>• vehicle replacement plan</li> </ul>	<p>●</p> <p>●</p> <p>○</p>	<p>●</p> <p>●</p> <p>○</p>	<p>◐</p> <p>●</p> <p>○</p>

● = Fully implemented; ◐ = Partially implemented; ○ = Not implemented

Notes: Alcohol Law Enforcement and State Capitol Police do not have fleet management personnel or operating equipment for fleet management activities. Both agencies' have some vehicle services and repairs done by the State Highway Patrol.

Source: Program Evaluation Division based on interviews and review of documents from Alcohol Law Enforcement, State Capitol Police, and State Highway Patrol.

# Oversight of Law Enforcement Vehicles is Scattered Throughout the State



Source: Program Evaluation Division and Information Systems Division