

F I N A L R E P O R T

NORTH CAROLINA

LEGISLATIVE BUILDING

Raleigh, North Carolina

20-140



Legislative
Office Bldg
Holloway

41#010144A

20-140

F I N A L R E P O R T

NORTH CAROLINA LEGISLATIVE BUILDING

Raleigh, North Carolina

Code 65912 - Item 1

and

Code 66101 - Item 1

1 November 1964

HOLLOWAY - REEVES
Architects
Raleigh, North Carolina

FINAL REPORT ON

NORTH CAROLINA LEGISLATIVE BUILDING

Raleigh, North Carolina

G E N E R A L D E S C R I P T I O N

The Building is devoted to the activities of the General Assembly and accommodates all legislative functions.

The property is located one block south of the Capitol and is bounded by Salisbury, Lane, Wilmington, and Jones Streets. It faces the latter, and covers an area formerly consisting of two blocks which were converted to one by the closing of Halifax Street between Jones and Lane Streets.

1. MAJOR DATES:

- | | | | |
|-----|-------------------|---|------------------|
| (a) | Opening of Bids | : | 14 December 1960 |
| (b) | Award of Contract | | |
| | 1. Building | : | 23 December 1960 |
| | 2. Furnishings | : | 11 July 1962 |
| (c) | Work Commenced | : | 16 January 1961 |
| (d) | Final Inspection | : | |
| | 1. Building | : | 5 December 1962 |
| | 2. Furnishings | : | 31 December 1962 |
| (e) | Acceptance | : | 15 December 1962 |

2. GENERAL DESIGN:

The building is monumental in aspect, of contemporary design with a classical character. Despite the monumental nature, the limited budget was a cogent factor in the planning.

The structure is square, with a periphery colonnade, and rests on a podium extending some distance beyond the columns. Four floors

in height, the ground floor is enclosed within the podium structure; and the third floor projects above the second floor in a cruciform shape, leaving four corner roof gardens formed by the roof of the second floor.

Construction includes a reinforced concrete frame, five pyramidal thin shell frames for the third floor, pan joists and flat slabs for the remainder of the frame. Exterior walls of the podium are granite, and other walls are white marble.

3. LOCATION OF FACILITIES:

(a) Basement:

- Post Office
- Senate Journal Office
- House Journal Office
- Enrolling Office
- Members' Offices
- Committee Rooms
- Preparation kitchen
- Custodian's Office
- Mechanical Services
- Parking

(b) First Floor:

- Garden Courts
- Committee Rooms (The majority are in this floor)
- News Media Facilities
- Members' Dining Areas
- Serving Kitchen

(c) Second Floor:

- Senate Chamber
- House Chamber
- Rotunda
- Members' Offices
- Library
- Legislative Telephone Room
- Chapel

(d) Third Floor:

- Public and News Galleries
- Main Hall and Display Areas
- Refreshment Counter
- Auditorium
- Promenades and Roof Gardens

4. SPACES:

(a) Chambers	:	2
(b) Auditorium	:	1
(c) Members' Offices	:	171
(d) Other Offices	:	54
(e) Committee Rooms	:	28
(f) Garden Courts	:	4
(g) Toilets	:	21
(h) Parking Spaces	:	90

E X T E R I O R D E S I G N

The general exterior finish is limestone for the First and Second Floors, Exposed Concrete Frame for the Third Floor, and Granite for the Podium.

1. Windows are fixed plate glass in brass frames. Entrances are color anodized aluminum "store front" construction.
2. Flat roofing is built-up, 4-ply, applied over rigid insulation. Pedestrian surfaces (Podium and roof gardens) are "rustic" or unground terrazzo. Sloped roofs are copper.
3. Exterior Basement walls have membrane waterproofing.

I N T E R I O R C O N S T R U C T I O N A N D F I N I S H

1. The intended classification is Underwriters' "AAA" and N C State Building Code "Semi-Fireproof".
2. The structural frame is reinforced concrete. Floors are reinforced flat slabs and pour joists. Third Floor pyramidal roofs are "thin-shell" with integral coffer ribs.
3. Generally, floor finishes are terrazzo; except Toilet floors are ceramic tile and Chamber floors are carpeted.
4. Wall finishes primarily are special 12" x 12" white concrete masonry units, ceramic tile in Toilets and Kitchen.
5. Ceilings are Keene's Cement in Toilets and Kitchen; Acoustical plaster elsewhere.

E L E C T R I C A L

1. Power to Building is supplied by transformer bank located in vault on north side of building. Transformers are property of Power Company and furnish 277/480 volt, 4-wire, 3-phase, wye, 60 cycle current.
2. Bus duct from transformers supply two building type switchboards and three motor control centers located in Basement Equipment Rooms.
3. Complete system of 277/480 volt panelboards throughout building with dry type transformer to provide 120/208 volt, 4-wire, 3 phase, wye, 60 cycle power to panelboards throughout building.
4. A 50 KW standby electric generator set furnishes 277/488 volt power and 120/208 volt power through dry type transformer to supply emergency outlets throughout the building.
5. Underfloor duct systems are provided for power and telephone facilities for the First, Second, and Third Floors.
6. Feeders to Panelboards and conduits underground and under slabs are rigid steel. Electric metallic tubing is used elsewhere.
7. A system of empty conduits, outlets, boxes and main cabinet is provided for live television and radio broadcasting.
8. A voice reinforcement and page call system is installed in House and Senate Chambers with outlets at each member's desk.
9. A master programmed, high frequency transmission time and signal system is installed with clocks and chimes located throughout the building.
10. A lightning protection system is provided consisting of air terminals, down conductors and ground rods.
11. Lighting fixtures in member's offices are incandescent with Fluorescent fixtures generally used elsewhere. Special chandeliers are installed in the House and Senate Chambers and over the Grand Stair.

Electrical (Continued)

12. Connected Loads:

120/208 Volts:

Lighting	251.4 KW
Receptacles	408.9 KW
Power	<u>62.4 KW</u>
	722.7 KW

277/480 Volts:

Lighting	188.1 KW
Power	<u>1396.2 KW</u>
	1584.3 KW

P L U M B I N G

1. The systems are connected to municipal water and sewer mains. Outside water piping for domestic service, standpipes and sprinkler lines is mechanical joint, enamelled cast iron pipe. Exterior sanitary and roof drainage lines are generally vitrified clay pipe with cast iron piping below streets and drives.
2. Interior hot and cold water lines and hot water return lines are hard drawn copper. Closed circuit piping to fountains is hard drawn copper.
3. Interior sanitary and drain piping below Basement Floor is extra heavy weight cast iron. Sanitary, and vent piping above Basement Floor, 3" and larger, is service weight cast iron. Piping 2-1/2" and smaller is zinc coated steel pipe.
4. Roof, Promenade and Podium drain lines are zinc-coated wrought iron.
5. Sprinkler piping and standpipes are zinc-coated steel pipe.
6. Plumbing fixtures are generally vitreous china, enameled cast iron or stainless steel. Floor drain and roof drain bodies are galvanized cast iron. Drinking fountains are satin finished bronze.
7. Fire Hose Cabinets are provided in each stairway at each floor on north and south sides of building connected to wet standpipes. Fire department connections are provided on each side of the building.

Plumbing (Continued)

8. The Basement Office Area is protected by a wet pipe sprinkler system. Remainder of Basement Area is protected by a dry pipe sprinkler system.
9. Six closed circuit pool-fountain systems are installed with two exterior fountains and four interior.
10. Water meter is installed in Basement Mechanical Equipment Room.
11. Domestic Hot Water is supplied from a steam fired generator furnished by the Heating and Air Conditioning Contractor.
12. A sump pump is provided in the transformer vault.
13. Total Plumbing Load: 488 Fixture Units.

H E A T I N G A N D A I R C O N D I T I O N I N G

1. The Year-Round Air Conditioning System consists of a number of air handling units all located in the Basement and each supplying one or more zones of the building with a constant quantity of air at a modulated temperature in response to a proportional acting temperature transmitter in each zone. A water coil in each air handling unit is supplied with chilled water from two 310-ton electric centrifugal water chillers for cooling. Except for certain units which are used for cooling only, each air handling unit has a steam coil for heating. The steam is supplied from the Capitol Buildings Heating Plant and underground tile conduit system. The condenser water is cooled by a cooling tower, located in the Basement. Chillers, pumps, and other major items of equipment are located in the Basement Equipment Room.
2. The Kitchen, all Toilets, and certain other areas are provided with ventilation systems.
3. A steam fired hot water generator and storage tank is provided for domestic hot water.
4. The Temperature Control System is pneumatic-electric with a graphic control center located in the Basement Mechanical Equipment Room.

Heating and Air Conditioning (Continued)

5. A fire and smoke detection system, of the Ionization Chamber Principle is installed in each air handling unit with a central control panel in the Basement Mechanical Equipment Room.
6. A system of condensate pumps is provided throughout the Basement Area to return condensate to the main pumping unit.
7. Ductwork is hot-dipped galvanized steel with 1" thick fiber-glas lining for all ducts below the First Floor.
8. All condensate piping is extra heavy weight wrought iron. Makeup water lines and drain lines are galvanized steel. All other piping is black steel.
9. Total Loads:

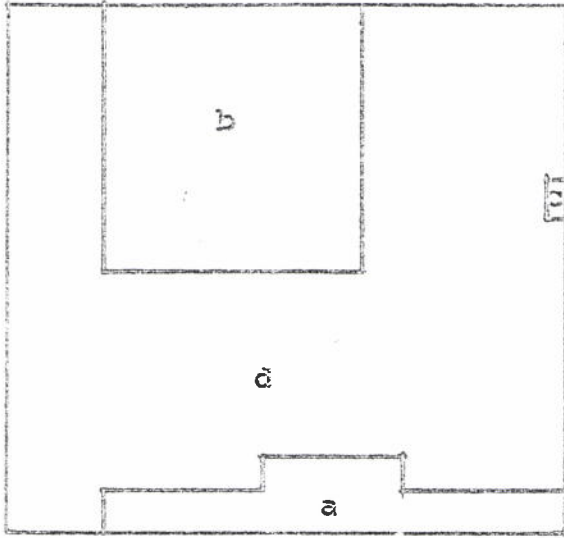
Cooling: 620 Tons

Heating: 7,194,000 BTU/HR

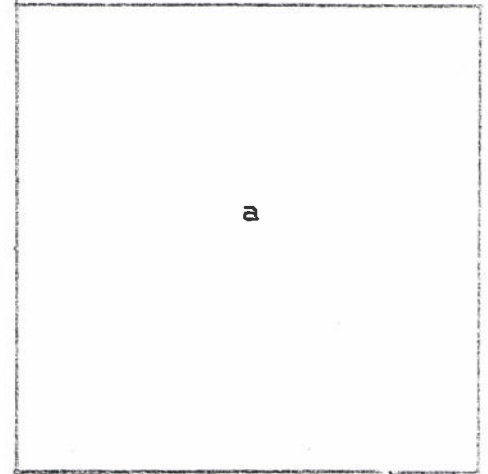
E L E V A T O R

Three elevators are provided. A simplex collective unit is located near the front of the building. A 2-unit duplex selective collective bank is located near the center. All machines are electric under-slung.

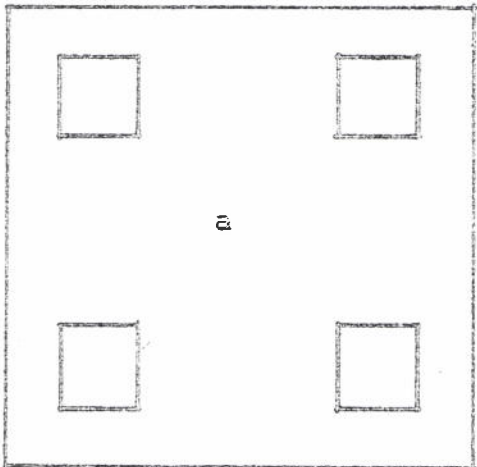
CUBIC FIGURES
I AREA CALCULATIONS



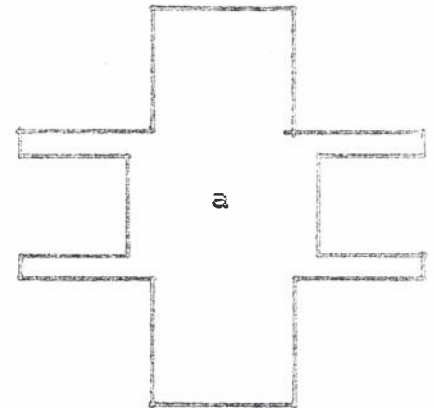
Basement



First Floor



Second Floor



Third Floor

1. BASEMENT:

A. Finished Area	$(73.66 \times 18) + (240.5 \times 20)$	=	6,136
B. Finished Area	(138.2×133)	=	18,381
C. Finished Area	(20.1×10.75)	=	216
D. Unfinished Area (Parking) @ 1/2	$(290.5 \times 274) - (26,688) \quad 1/2$	=	<u>26,355</u>

Total

51,088

Exhibit A, continued:

2. FIRST FLOOR:

E. Finished Area $242 \times 242 = 58,564$

3. SECOND FLOOR:

F. Finished Area $(242 \times 242) - 4(42 \times 42) = 51,508$

4. THIRD FLOOR:

G. Finished Area
 $(72 \times 200) + 2(72 \times 72) - 2(52 \times 62) = \underline{18,324}$

TOTAL GROSS AREA (adjusted)	179,484 Sq Ft
	26,355
TOTAL GROSS AREA	205,839 Sq Ft

Exhibit A, continued:

Percentages of Total Net Area:

$\frac{\text{Specific Area}}{\text{Total Net Area}} \times 100$	=	Percentage of Total Net Area
-Offices		13.4%
-Committee Rooms, Chapel and Auditorium		9.9%
-Courts and Mezzanines		17.4%
-Supply Rooms and Storage Rooms		3.0%
-Mechanical Equipment Rooms		2.8%
-Kitchen and Dining Rooms		2.4%
-Stairs and Elevators		2.4%
-Corridors and Foyers		4.7%
-Toilets and Restrooms		2.7%
-Chambers		5.1%
-Public Exhibits and Rotundas		5.1%
-Public Galleries		1.9%
-Parking		28.0%
-Press Media		1.2%

III CUBAGE

Basement:	77,443 Sq. ft. x 15 ft.	=	1,161,645 cu. ft.
First Floor:	58,564 Sq. Ft. x 12 Ft.	=	702,768 cu. ft.
Second Floor:	58,564 Sq. Ft. x 14.9 Ft.	=	872,594 cu. ft.
Third Floor:			
	(23,616 x 12) + 1/3(72 x 72) (19.5)	=	<u>317,088 cu. ft.</u>
	TOTAL CUBAGE		3,054,095 cu. ft.

PREPARED BY: [illegible]

BY: [illegible]

	Office	Home & Office	Course	Supply & Storage	Books	Materials	Travel	Other	Char-	Public	Public	Reserve
									ter	Collection	Collection	
Expenses:	1,200	2,715		4,525	5,824	2,120	700	1,076				20,000
Total 2000:	12,187	10,720	19,504	211	8	1,508	1,008	4,29		1,287		420
Total 2001:	11,647	1,976	13,092	120	2		2,120	1,21		1,465	18,045	5,814
Total 2002:		5,416		176	30	501	415			465		3,567
TOTALS	23,834	22,102	32,596	3,991	10	1,509	3,533	5,506	18,110	3,218	19,131	3,012

BY: [illegible]

TOTAL NET ASSETS: 100,000 50,000

TOTAL GROSS ASSETS: 200,000 100,000

TOTAL ASSETS: 100,000 50,000

E X H I B I T B

C O S T D A T A

1. General Contract:

(a)	Contract Amount	\$ 3 051 650 00	
(b)	Deducted by Change Order	74 875 00	
(c)	Added by Change Order	372 179 00	
Sub-Total General Contract			\$ 3 348 954 00

2. Plumbing Contract:

(a)	Contract Amount	201 400 00	
(b)	Deducted by Change Order	10 267 00	
(c)	Added by Change Order	3 422 00	
Sub-Total Plumbing Contract			194 555 00

3. Heating Contract:

(a)	Contract Amount	621 231 00	
(b)	Deducted by Change Order	None	
(c)	Added by Change Order	12 621 00	
Sub-Total Heating Contract			633 852 00

4. Electrical Contract:

(a)	Contract Amount	243 054 00	
(b)	Deducted by Change Order	None	
(c)	Added by Change Order	43 194 00	
Sub-Total Electrical Contract			286 248 00

Exhibit B, continued:

5. Elevator Contract:

(a) Contract Amount	\$ 78 623 00	
(b) Deducted by Change Order	None	
(c) Added by Change Order	<u>None</u>	
Sub-Total Elevator Contract		78 623 00

6. Kitchen Contract:

(a) Contract Amount	4 400 00	
(b) Deducted by Change Order	None	
(c) Added by Change Order	<u>52 520 00</u>	
Sub-Total Kitchen Contract		56 920 00

7. Voice Reinforcement System Contract:

(a) Contract Amount	16 732 00	
(b) Deducted by Change Order	None	
(c) Added by Change Order	<u>1 623 95</u>	
Sub-Total Voice Reinforcement Contract		18 355 95

FURNISHINGS

8. John Stuart, Inc

(a) Contract Amount	165 050 00	
(b) Deducted by Change Order	None	
(c) Added by Change Order	<u>11 755 00</u>	
Sub-Total		176 805 00

Exhibit B, continued:

9.	<u>Alfred Williams & Company</u>		
	(a) Contract Amount	\$ 152 243 00	
	(b) Deducted by Change Order	None	
	(c) Added by Change Order	<u>7 136 00</u>	
	Sub-Total		159 379 00
10.	<u>Southern Desk Company</u>		
	(a) Contract Amount	8 539 00	
	(b) Deducted by Change Order	None	
	(c) Added by Change Order	<u>None</u>	
	Sub-Total		8 539 00
11.	<u>Universal Equipment Company</u>		
	(a) Contract Amount	49 926 00	
	(b) Deducted by Change Order	None	
	(c) Added by Change Order	<u>None</u>	
	Sub-Total		49 926 00
12.	<u>Stage Decoration and Supplies</u>		
	(a) Contract Amount	27 777 00	
	(b) Deducted by Change Order	None	
	(c) Added by Change Order	<u>8 019 00</u>	
	Sub-Total		<u>35 796 00</u>
	(FURNISHINGS TOTAL: \$ 430 445 00)		
13.	TOTAL CONSTRUCTION CONTRACTS		\$ 5 047 952 95
14.	Architectural Fees		<u>239 465 96*</u>
15.	TOTAL CONSTRUCTION COST		\$ 5 287 594 26**

Exhibit B, continued:

11. Cost per Square Foot (Gross Area):

(a) Total Gross Area	\$ 25 69
(b) Adjusted Gross Area	\$ 29 46

12. Cost per Cubic Foot \$ 1 73

13. Percentages of total cost for each Contract:

-General	: 63.4%
-Plumbing	: 4.9%
-Heating	: 12.0%
-Electrical	: 5.3%
-Elevator	: 1.4%
-Kitchen	: 1.0%
-Furnishings	: 8.1%
-Voice Rein	: .34%
-Arch Fee	: 4.5%

* Part of this (\$ 3 959 00) was paid to Richard C Bell, Landscape Architect.

** This figure does not include Landscaping

E X H I B I T C

Change Orders

GENERAL CONTRACT:

G-1	Provide marble veneer exterior facing in lieu of Limestone	Add	109 830 00
G-2	Omit duct boots (furnished by H &A/C Contr); Change Hinges; Provide Caisson load test; and miscellaneous changes.	Deduct	952 00
G-3	Provide N C Granite facing on exterior of all Podium walls	Add	120 133 00
G-4	Substitute Thiokol caulking and Neoprene expansion joint for exterior terrazzo	Add	7 906 00
G-5	Provide dividers in Galleries of each Chamber	Add	1 843 00
G-6	Provide a Lamson Corp. pneumatic tube system for the House and Senate Chambers	Add	4 456 00
G-7	Provide all Work included under "Alternate Number G-4"	Add	35 184 00
G-8	Furnish & install cast stone facing at 2nd Fl level of Grand Stair; Omit bevel on special concrete block; Revise granite anchorage system for n. and w. Podium walls; Revise House and Senate Daises	Deduct	4 437 00
G-9	Change exterior spandrels to Dark Gray; Omit wall between Rooms 1411, and 1414	Add	172 00
G-10	Storm sewer work in accordance with Dwg No Site-3R	Add	3 573 00
G-11	Adjustment of as-built quantities of caissons	Deduct	68 194 00
G-12	Additional Drapery track for perimeter offices	Add	4 033 00

G-13	One-way master carriers, cord, and tassels for drapery track; Add abrasive nosing strip and two abrasive stopping lines to all stair treads except Grand Stair; Furnish 44 planting boxes; Provide curb and gutter on Lane, Jones, and Wilmington Sts; Provide new sidewalk around entire building	Add	\$ 36 473 00
G-14	Change size of glazed partitions; Omit steel reinforcing where glazed partitions join masonry; Change height of folding wood doors in Rms 1112 & 1204; Add miscellaneous pitch pockets and flashings	Deduct\$	325 00
G-15	Provide new curb and gutter along North Salisbury Street.	Add	\$ 917 00
G-16	Miscellaneous Changes	Add	\$ 2 970 00
G-17	Provide 4 to 5-inch cover of topsoil on all yard area	Add	\$ 5 551 00
G-18	Omit Grand Stair terrazzo; Omit Basement ceiling painting; Changes in Rms 203 & 1617; Paint flag pole; Provide steel shelving in Rm 2407; Provide asphalt paint coating for planters; Omit yard grassing, etc	Add	\$ 4 917 00
G-19	Apply one coat of paint on special block walls of interior rooms and stairways (not corridors and Grand Stair)	Add	\$ 3 371 00
G-20	Omit roof treatment; Reduce width of front sidewalk; other miscellaneous changes	Deduct\$	967 00
G-21	Furnish & install wooden shutters ; Raise Speaker Dais in House; Remove foundations remaining from Building; Repaint two flagpoles gold; Reduce the height of lecterns	Add	\$ 30 245 00
G-22	Additional letters, plastic plates, holders, etc; Perform miscellaneous extras	Add	\$ 605 00
Total Additions to General Contract			\$297 304 00

Exhibit C, continued:

PLUMBING CONTRACT:

P-1	Dry-type portion of Sprinkler System, change all pendant heads to on-pipe heads	Deduct \$	9 100 00
P-2	Provide connections for Main Kitchen and Serving Kitchen as provided for in "Alternate Number P-2"	Add \$	1 859 00
P-3	Materials and labor to provide drainage for the East side Podium Planters	Add \$	861 00
P-4	Changes in Sprinkler system; Add manhole; Change in 8" fire line; Omit wet pipe sprinkler system in Basement Office and Service Areas; Add water closet and lavatory at First Aid Room 1617; Provide fire hydrant at se corner Jones and Halifax Sts	Deduct \$	167 00
P-5	Installing Taco Model No 1620; Install Channel Iron from drip drain on air handling units into P-12 drain and install steel plate over Item P-12	Add \$	702 00
P-6	Credit for 50 cu yd rock included in Bid	Deduct \$	<u>1 000 00</u>
	Total Deductions to Plumbing Contract	\$	6 845 00

ELECTRICAL CONTRACT:

E-1	Change certain circuit breakers	Add \$	866 00
E-2	Provide Electrical Work in Kitchen and Dining Room as included under "Alternate No E-1"	Add \$	7 836 00
E-3	Provide anodized gold finish on Type "K" fixtures and matching sprayed-on gold finish for Type "L" fixtures	Add	484 00
E-4	Provide additional electrical service for new condensate pumps in Basement	Add \$	1 452 00
E-5	Miscellaneous changes in fixtures, electrical panels, supports, switches, electrical outlets, installation of switches in book shelves	Add \$	3 222 00

Exhibit C, continued:

E-6	Furnish exterior floodlights; Furnish and install 10 Chandeliers	Add	\$ 27 835 00
E-7	Add additional lights, switches, receptacles, transformer, telephone outlets and TV System outlet	Add	\$ <u>1 499 00</u>
Total Additions to Electrical Contract			\$ 43 194 00

AIR CONDITIONING, HEATING & VENTILATING CONTRACT:

H-1	Changes in return grilles and connecting ductwork in House and Senate Chambers to place grilles at Daises	Add	\$ 866 00
H-2	Provides heating and ventilating of Kitchen; re-routing of condensate drains & addition of 8 new condensate pumps in Basement; 3" drain from the new steam piping manhole; re-routing of steam main service at front of building	Add	\$ 10 823 00
H-3	Covers over elevator equipment; Six toe space grilles; Blanks mounted behind bird screens; Add four supply outlets; Add one ceiling exhaust diffuser; Clean ink markings on exposed ductwork	Add	\$ <u>932 00</u>
Total Additions to A/C, HTG & VEN Contract			\$ 12 621 00

ELEVATOR CONTRACT:

No Change

KITCHEN CONTRACT:

K-1	Provide all work included under "BASE BID B" of the Contract Documents	Add	\$ 51 900 00
K-2	Provide stainless steel adjustable legs for 2 refrigerators	Add	\$ 118 00
K-3	N C Sales Tax on equipment of a portable nature	Add	\$ <u>502 00</u>
Total Additions to Kitchen Contract			\$ 52 520 00

Exhibit C, continued:

VOICE REINFORCEMENT CONTRACT: No Change Orders issued.

FURNISHINGS

JOHN STUART INC:

JS-1	Provide additional Desks, Tables, and Shelves	Add	\$ 8 354 00
JS-2	Provide Newspaper Rack and Dictionary Stand	Add	\$ 190 00
JS-3	Provide Hutch on Desk, Arm Chairs and End Tables; Deduct three Committee Tables, Add Tables, Shelving Units and Desks	Add	\$ 3 074 00
JS-4	Provide 4 Lecterns and 1 Additional Desk; Omit Card Catalog	Add	\$ <u>137 00</u>
Total Additions			\$ 11 755 00

ALFRED WILLIAMS & COMPANY:

AW-1	Provide additional Chairs and Filing Cabinets	Add	\$ 5 077 00
AW-2	Add Storage Units, 1 Sofa, Fabric Upholstery; Deduct certain chairs	Add	\$ 2 059 00
AW-3	Provide additional waste baskets, Coat-and-hat racks, and ash trays	Add	\$ <u>1 280 00</u>
Total Additions			\$ 8 416 00

SOUTHERN DESK COMPANY:

No Change

UNIVERSAL EQUIPMENT COMPANY:

No Change

Exhibit C, continued:

STAGE DECORATION & SUPPLIES:

SD-1	Provide Draperies in Senate and House Galleries; Provide Hardware for Draperies	Add	\$ 6 250 00
SD-2	Labor and Materials for Dais Draperies for House and Senate	Add	<u>\$ 1 769 00</u>
Total Additions			\$ 8 019 00

E X H I B I T D

List of Contractors,
Sub-Contractors, and
Material Suppliers

PRIME CONTRACTORS:

General Contract:

Rea Construction Company, Charlotte, N C

Plumbing Contract:

W R Proctor Plumbing Company, Raleigh, N C

Heating, Ventilating and Air Conditioning Contract:

Bolton Air Conditioning & Heating Company, Raleigh, N C

Electrical Contract:

E C Ernst, Inc, Norfolk, Virginia

Elevator Contract:

Monarch Elevator Company, Greensboro, N C
(Dover Elevator Company)

Kitchen Contract:

Food Equipment Contract Company, Inc, Raleigh, N C

Furnishings Contract:

John Stuart Inc, New York 16, N Y

Alfred Williams & Company, Raleigh, N C

Southern Desk Company, Hickory, N C

Universal Equipment Company, Raleigh, N C

Stage Decoration and Supplies, Greensboro, N C

Voice Reinforcement System Contract:

Long Engineering Co, Winston-Salem, N C

SUB-CONTRACTORS AND MATERIAL SUPPLIERS:

<u>Sub-Contract or Material</u>	<u>Contractor or Dealer</u>	<u>Address</u>
G E N E R A L C O N T R A C T		
Suspended Grid System, Basement Ceiling	Acoustics, Inc	Charlotte, N C
Construction Fence	Allison Fence Co	Charlotte, N C

Exhibit D. continued:

<u>Sub-Contract or Material</u>	<u>Contractor or Dealer</u>	<u>Address</u>
Door Numbers, Letters & Signs	Andco Industries Corp	Greensboro, N C
Plywood Kote Form Lacquer	J P Banning	New York 17, N Y
"H" Piling	Bethlehem Steel Co	Greensboro, N C
Structural Douglas Fir	Bright-Brooks Lumber Co	Charlotte, N C
Ready Mixed Concrete	Carolina Ready Mixed Concrete Co	Raleigh, N C
Caisson Foundation Work	Caisson Corporation	Niles, Illinois
Erection of MoSai and Granite	Carolina Stone Setting Co	Morrisville, N C
Brass rods & galvanized anchors & cramps for setting granite	Century Steel & Iron Co	Charlotte, N C
Corner Former	Construction Materials Co	Charlotte, N C
Insulation & Lumber	Construction Materials Co	Charlotte, N C
Drapery Track	Delph Hardware & Specialty	Charlotte, N C
Toilet Room Accessories	Dillard Paper Co	Charlotte, N C
Masonry Work	Dixie Construction Co	Birmingham, Ala
Vinyl Asbestos Resilient Flooring & Vinyl Base	R L Dresser	Raleigh, N C
Treated Lumber	Durable Wood Preserving Co	Charlotte, N C
Reinforcing Steel	Easterby & Mumaw	Raleigh, N C
Curing Compound	Easterby & Mumaw	Charlotte, N C
Concrete Testing	Froehling & Robertson, Inc	Raleigh, N C
Landscaping	Gilmore Plant & Bulb Co	Julian, N C
Waterproofing	Guaranteed Waterproofing Co	Greensboro, N C

Exhibit D, continued:

<u>Sub-Contract or Material</u>	<u>Contractor or Dealer</u>	<u>Address</u>
Clear Bond	Guardian Chemical Co	Atlanta 1, Ga.
Burlap for rubbing concrete	Harper Crawford Bag Co	Charlotte, N C
Erection of Rebars, Mesh & Corruform	Donald G Joyner	Raleigh, N C
Lathing & Plastering	C W Kirkland Co	Charlotte, N C
Stone Base, Prime Coat 2" asphalt pavement & concrete curb & gutter work	T A Loving Co	Raleigh, N C
Pneumatic Tube System	Lamson Corporation	Charlotte, N C
Cast Stone	Mabie-Bell Company	Greensboro, N C
Millwork	Martin-Millwork Co	Raleigh, N C
Demolition, Clearing, Grubbing, excavation, compaction & Utilities	C C Mangum	Raleigh, N C
Perforated Concrete Pipe	N C Products Corp.	Raleigh, N C
Tray Conveyors	Samuel Olson Mfg Co, Inc	Charlotte, N C
Hollow Metal Doors & Frame & Finish Hardware	Peden Steel Co	Raleigh, N C
Footing Drain & Planter Drain	Pomona Terra-Cotta Co	Greensboro, N C
Glass, Glazing, Mirrors, Aluminum Entrance and Related Work	Britchard Paint & Glass Co	Charlotte, N C
Steel Lockers	Republic Steel Corp	Charlotte, N C
Folding Wood Doors, Vault Doors, Rolling Grilles and Flagpoles	Roanoke Engineering Sales	Charlotte, N C
Copper Flashing	R G Ross & Co	Charlotte, N C

Exhibit D, continued:

<u>Sub-Contract or Material</u>	<u>Contractor or Dealer</u>	<u>Address</u>
Cut Granite Main Entrance Steps & Cheek Blocks	J D Sargent Granite Co	Mount Airy, N C
Roofing & Related Items	E L Scott Roofing Co	Kinston, N C
Metal Pans	Southern G F Company	Atlanta, Ga
Drainage Fill	Superior Stone Co	Raleigh, N C
Tile, Terrazzo & Marble	United Terrazzo & Tile Corp.	Raleigh, N C
Painting & Finishing	A B Whitley, Inc	Greenville, N C
Misc. Iron & Metals	J D Wilkins Co	Greensboro, N C
Pile Driving	Wilson Construction Co	Salisbury, N C
Caulking	A J Yates, Inc	Charlotte, N C

P L U M B I N G C O N T R A C T

Fixtures, Piping, Fittings	Atlas Supply Company	Raleigh, N C
Insulation	Standard Insulation Co	Raleigh, N C

H E A T I N G A N D V E N T I L A T I N G C O N T R A C T

Water Chiller	Worthington Corporation	East Orange, N J
Air Handling Units	Worthington Corporation	East Orange, N J
Water Circulating Pumps	Weiman	Columbus, Ohio
Water Cooling Tower	Baltimore Air Coil Co	Baltimore, Md
Exhaust Fans	ILG	Chicago, Ill
Radiation	Schemenauer	Holland, Ohio

Exhibit D, continued:

<u>Sub-Contract or Material</u>	<u>Contractor or Dealer</u>	<u>Address</u>
Electric Motors	Elliott Company	Jeannette, Pa.
Controls	Minneapolis-Honeywell Regulator Company	Minneapolis, Minn.
Grilles & Diffusers	Carnes	Verona, Wisc.
Duct Work & Transite	Hamlin Sheet Metal Co	Raleigh, N C
Insulation	Standard Insulation Co	Raleigh, N C
Condensate Pump	Weiman	Columbus, Ohio
Smoke Detectors	Pyrotronics	Newark, N J
H W Generator	Old Dominion Iron & Steel Co	Richmond, Va
Expansion Tanks	General Tank Company	Reidsville, N C
Flash Tank	General Tank Company	Reidsville, N C
Valves	Jenkins Valve Co	Wansworth, Ohio
Hot Water Specialties	Hoffman & Bell & Gossett	Morton Grove, Ill
Therm-a-Tile Underground Insulation	Standard Insulation Co	Raleigh, N C

E L E C T R I C A L C O N T R A C T

<u>Sub-Contract or Material</u>	<u>Contractor or Dealer</u>	<u>Address</u>
Lamps, Fixtures, Conduit Equip. Major, Underfloor duct, All misc. material	General Electric Supply	Raleigh & Norfolk
Misc. Tools & Equipment	Dillon Supply Company	Raleigh, N C
Misc. Material	Stephenson, Inc	Raleigh, N C

Exhibit D, continued:

<u>Sub-Contract or Material</u>	<u>Contractor or Dealer</u>	<u>Address</u>
Steel City boxes, Kindorf & Crouse Hinds products	Noland Company	Durham, Norfolk & Falls Church
10 Chandeliers	The Herwig Company	Chicago, Ill.
Fittings, Misc. Material	Westinghouse Electric	Norfolk & Charlotte
Electric box & Misc. Metal	Phillips Roofing Co	Raleigh, N C
Wire & Cable	Herman S Ellen & Asso	Baltimore, Md
Rental of coasters, bucks and braces	Arrow Constr. Equip.	Greensboro, N C
Time & Signal System	Simplex Time Recorder	Norfolk, Va
Boxes & Cabinets	Empire Metal Box Co	Brooklyn
Electric Generator Set	Tidewater Supply Co	Norfolk, Va
Devices, Receptacles & Switches	Maurice Electric Supply	Washington
Lightning Protection System	Modern Lightning Protection Company	Raleigh, N C
Misc. Material	Graybar Electric Co	Raleigh, N C
Fuses, links, switches, panels	Electrical Equipment Co	Raleigh, N C

E L E V A T O R C O N T R A C T

<u>Sub-Contract or Material</u>	<u>Contractor or Dealer</u>	<u>Address</u>
Hoistway Door Entrances & Elevator Cabs	W S Tyler Company	Cleveland, Ohio

Exhibit D, continued:

K I T C H E N C O N T R A C T

<u>Sub-Contract or Material</u>	<u>Contractor or Dealer</u>	<u>Address</u>
Ranges, Fryer, Oven, and Griddles	General Electric Corp	Chicago, Ill.
Steamer	Market Forge Co	Everett, Mass.
Kettle	Groen Mfg Co	Elk Grove Village, Ill.
Mixer, Glasswasher, Dishwasher, Peeler, Slicer	Hobart Mfg Co	Troy, Ohio
Radar Range	Raytheon Mfg Co	Waltham 54, Mass.
Refrigerators	Koch Refrigerators	Kansas City, Kan.
Cutting Blocks	Bally Block Co	Bally, Pa.
Booster Heater	Mill Power Supply	Charlotte, N C
Walk-in Refrigerator	The Elliott-Williams Co	Indianapolis, Ind.
Wire Shelving for Walk- in Refrigerator	William Hodges & Co	Philadelphia, Pa.
Scotsman ice machines	Noland Company	Raleigh, N C
Coffee Urns	Blickman, Inc	Weehawken, N J
Toaster	Toastmaster Products	Elgin, Ill.
Drink Mixer	Hamilton Beach Mfg Co	Racine, Wisc.
Storage Room Shelving	Eastern Steel Rack Co	Boston, Mass.
Water Cooler	Filtrine Mfg Co	Waldwick, N J
Coffee Maker (Warmer)	Cory Corp.	Chicago, Ill.
Soup Kitchen	H J Heinz Co	Roanoke, Va.
Beverage Cooler	Raetone Mfg. Co.	Plymouth Meet- ing, Pa.
Kelvinator Ice Cream Box	Carolina Sales Corp.	Greenville, N C
Stainless Steel Fabricated Items	Stainless Steel Fabri- cators, Inc.	Raleigh, N C

Exhibit D, continued:

FURNISHINGS

ALFRED WILLIAMS & COMPANY

<u>Sub-Contract or Material</u>	<u>Contractor or Dealer</u>	<u>Address</u>
Chairs, Benches, Dining Room and Lobby Furniture	J G Furniture Co, Inc	New York
Round Wooden Waste Baskets	Jens Risom Co	New York
Sofas	Monarch Chair Co	High Point, N C
Waste Baskets	Globe-Wernicke Co	Cinn., Ohio
Coat Racks	J D Wilkins Co	Greensboro, N C
Filing & Storage Cabinets	All Steel Equip Co	Aurora, Ill

UNIVERSAL EQUIPMENT COMPANY

Auditorium Chairs	American Seating Co	Grand Rapids, Mich.
Floor Covering	Geo. T Wood & Sons	High Point, N C
Floor Covering Installation	R M Moore	Raleigh, N C

SOUTHERN DESK COMPANY

Upholstery Fabric	Dazian's Inc	New York, N Y
-------------------	--------------	---------------

STAGE DECORATION AND SUPPLIES

Gold jacquard fabric	Frissell Fabrics	Burlington, N C
Casement cloth type fabric Saran Regency for office windows; Casement cloth type fabric for windows in Senate & House Chambers, Triumph Ro-X; Moire satin for podium back- drop	M H Lazarus Company	New York, N Y

JOHN STUART INC

Shelves, Tables, Desks, & other Case Goods	Mount Airy Chair Co	Mount Airy, N C
---	---------------------	-----------------