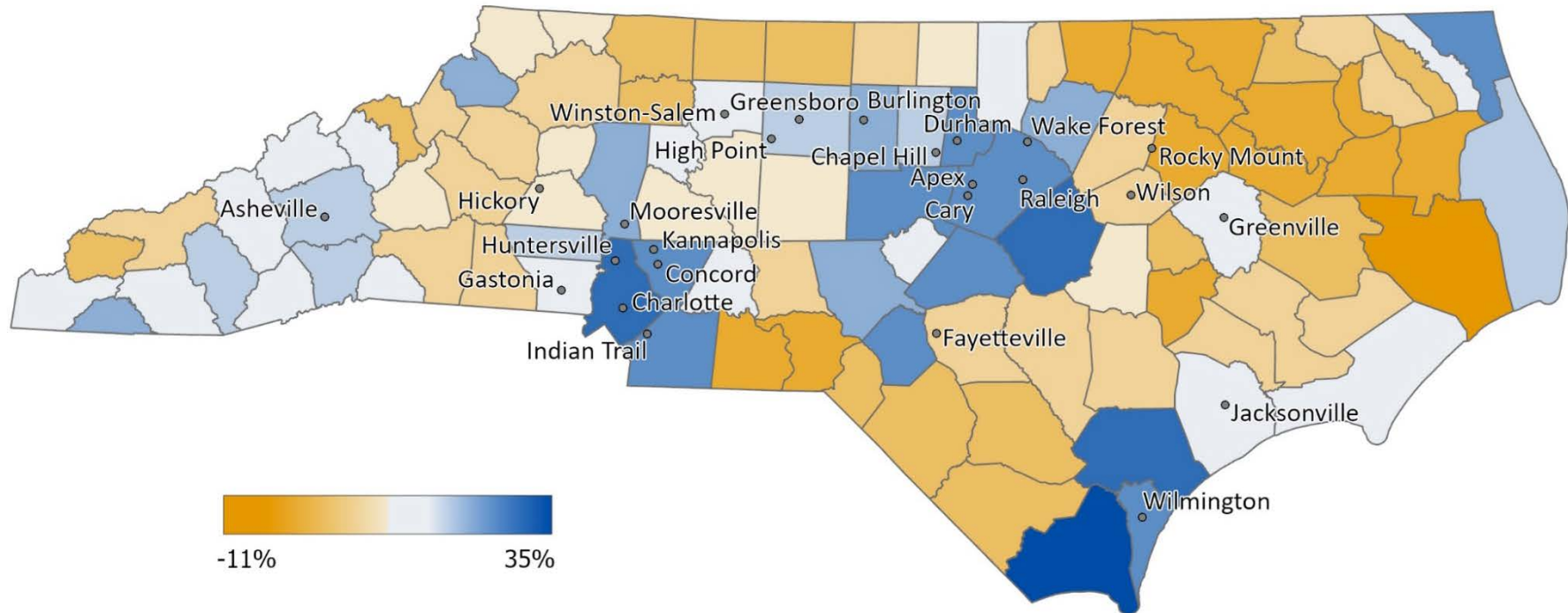


These maps were created by the Information Systems Division, in conjunction with the Fiscal Research Division. Both are nonpartisan central staff divisions serving all members of the General Assembly.

## Population Change by County, 2010-2020



Source: NC Office of State Budget & Management

This map reflects population change by county from 2010 to 2020. See page two for table of exact figures.

**Notes:**

- (1) Counties shaded in blue experienced population growth. Counties in orange experienced population decline.
- (2) Cities marked represent the State's 25 most populous cities as of July 2019.

## Population Change by County, 2010-2020

County (A-C)	Change	County (D-L)	Change	County (M-R)	Change	County (S-Y)	Change
Alamance	15%	Dare	11%	Macon	9%	Sampson	1%
Alexander	4%	Davidson	5%	Madison	10%	Scotland	-1%
Alleghany	3%	Davie	7%	Martin	-6%	Stanly	6%
Anson	-6%	Duplin	2%	McDowell	4%	Stokes	-2%
Ashe	3%	Durham	18%	Mecklenburg	23%	Surry	-1%
Avery	2%	Edgecombe	-7%	Mitchell	-2%	Swain	1%
Beaufort	-1%	Forsyth	9%	Montgomery	0%	Transylvania	8%
Bertie	-8%	Franklin	15%	Moore	16%	Tyrrell	-4%
Bladen	-2%	Gaston	9%	Nash	0%	Union	20%
Brunswick	35%	Gates	0%	New Hanover	18%	Vance	2%
Buncombe	12%	Graham	-2%	Northampton	-8%	Wake	22%
Burke	2%	Granville	8%	Onslow	9%	Warren	-5%
Cabarrus	21%	Greene	-1%	Orange	11%	Washington	-9%
Caldwell	1%	Guilford	11%	Pamlico	1%	Watauga	15%
Camden	7%	Halifax	-7%	Pasquotank	-2%	Wayne	3%
Carteret	7%	Harnett	19%	Pender	23%	Wilkes	2%
Caswell	0%	Haywood	8%	Perquimans	1%	Wilson	2%
Catawba	4%	Henderson	12%	Person	3%	Yadkin	-1%
Chatham	22%	Hertford	-3%	Pitt	7%	Yancey	6%
Cherokee	9%	Hoke	17%	Polk	7%		
Chowan	-4%	Hyde	-11%	Randolph	3%		
Clay	14%	Iredell	15%	Richmond	-4%		
Cleveland	2%	Jackson	11%	Robeson	-3%		
Columbus	-3%	Johnston	25%	Rockingham	-2%		
Craven	0%	Jones	1%	Rowan	4%		
Cumberland	2%	Lee	8%	Rutherford	2%		
Currituck	18%	Lenoir	-6%				
		Lincoln	13%				

Source: Office of State Budget and Management